



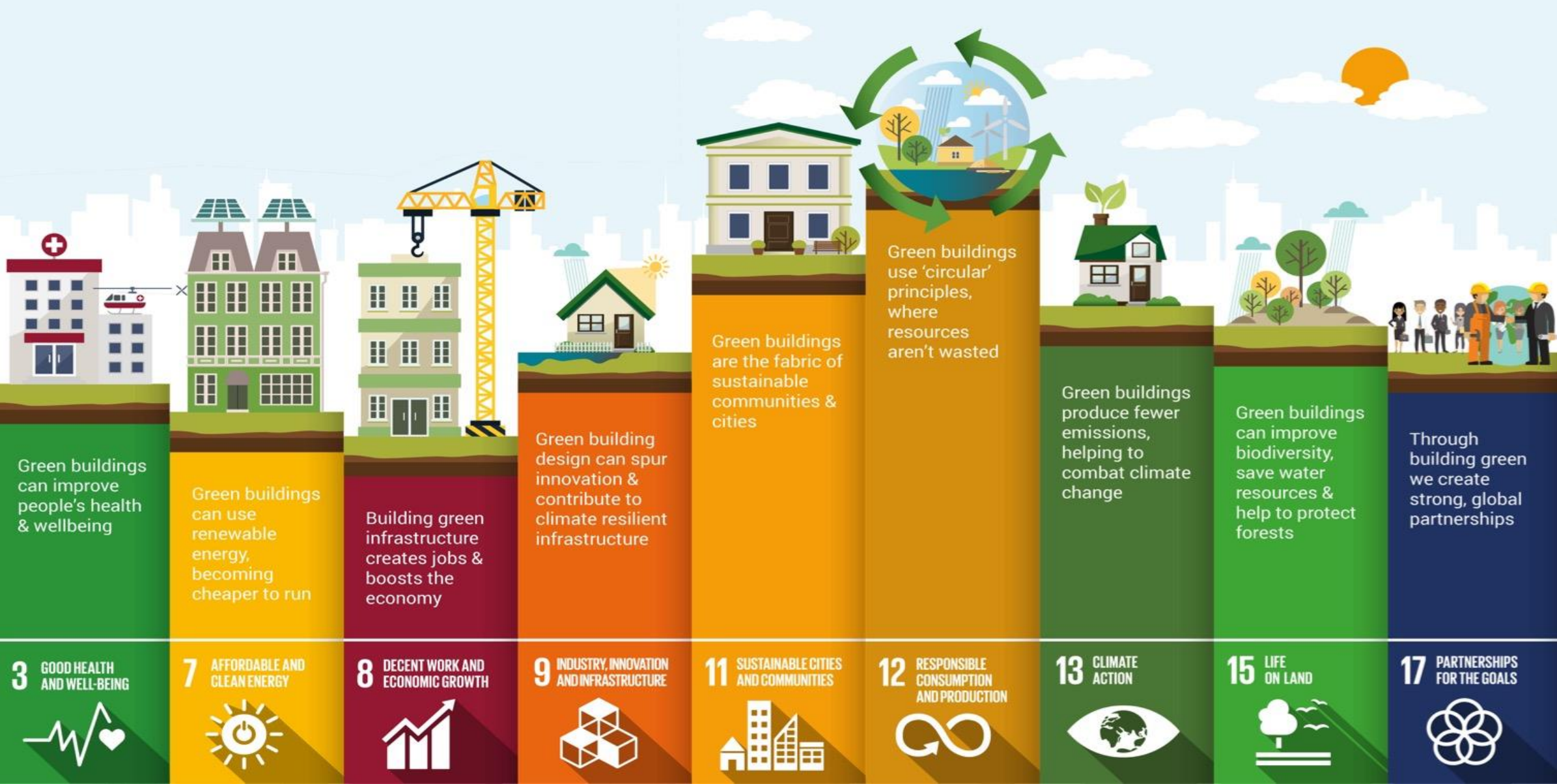
Creating Green and Sustainable Buildings

Ramon Rufino
Philippine Green Building Council

24 November 2020
Stratbase ADR Institute Pilipinas Conference 2020

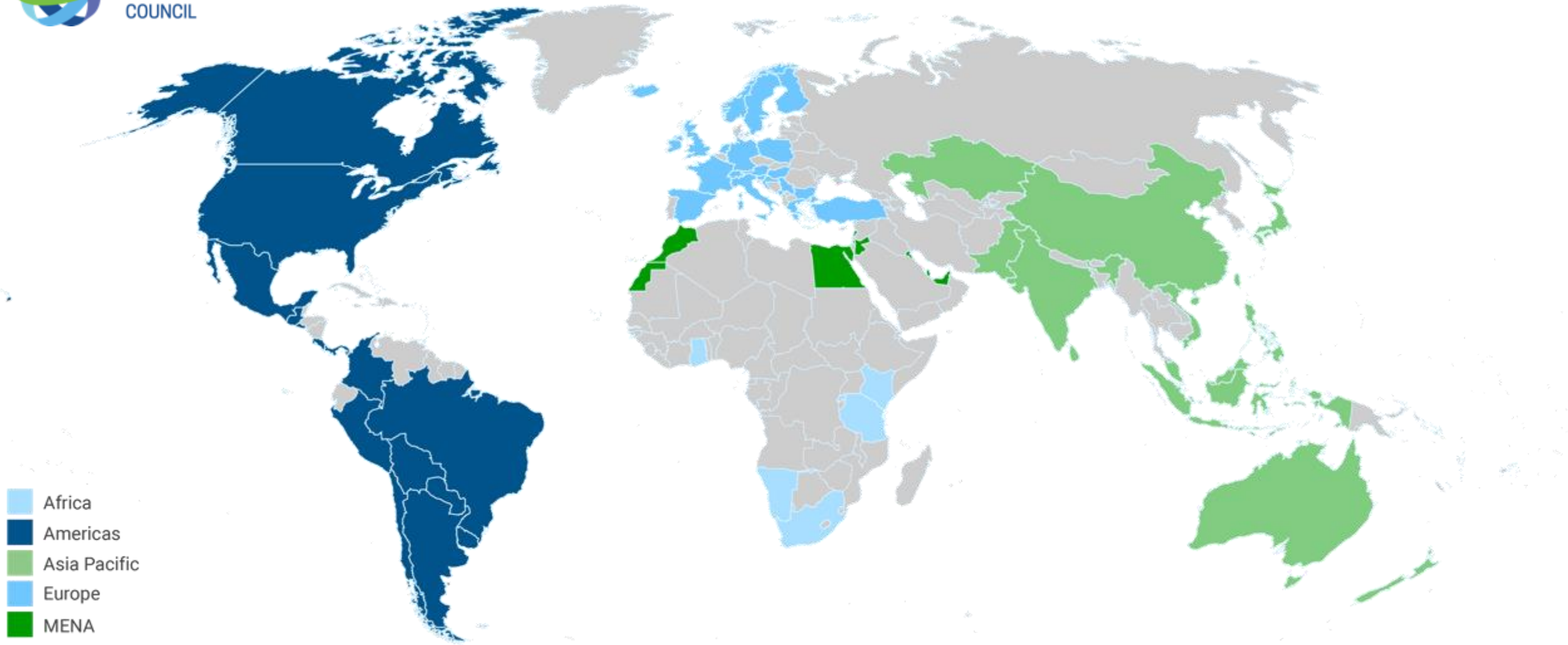
Green building refers to a project that is conceptualized, planned, designed, constructed, and operated in the **most resource-efficient manner, with the least environmental impact.**

Our sector is crucial to delivering global goals





WORLD
GREEN
BUILDING
COUNCIL



EUROPE REGIONAL NETWORK



AMERICAS REGIONAL NETWORK



WORLD
GREEN
BUILDING
COUNCIL



MENA REGIONAL NETWORK



GREEN BUILDING COUNCIL
NAMIBIA



Rwanda Green Building Organization



AFRICA REGIONAL NETWORK



Indian Green Building Council
Greening India since 2001



ASIA PACIFIC REGIONAL NETWORK

Green building rating tools – also known as certification – are used to **assess and recognize buildings which meet certain green requirements or standards.**

Rating tools vary in their approach and can be applied to the planning and design, construction, operation and maintenance, renovation, and eventual demolition phases of a green building.



PHILGBC facilitates the sharing of knowledge on green building in the building industry to ensure a sustainable environment.

More than a Decade of Market Transformation.

ESTABLISHED MEMBER OF



**WORLD
GREEN
BUILDING
COUNCIL**



MEMBER ORGANIZATION



INSPIRE
CONFIDENCE
BUILD *TRUST*

What is the Core Framework?

The Core Framework of **BERDE** defines the different credits that are essential in developing a green building project.

Electives are optional credits that may provide wider sustainability benefits, which are not necessarily part of the Core Framework.

These additional credits are maintained under the Credit Library.

CORE FRAMEWORK



Management



Use of Land and Ecology



Energy Efficiency and Conservation



Water Efficiency and Conservation



Waste Management



Green Materials



Transportation



Indoor Environment Quality



Emissions

ELECTIVES



Employment and economic opportunities



Education and skills development



Health and safety



Equality



Community engagement and benefit

Get your project **BERDE** Certified

Use the latest version of **BERDE** in your project, register your project and successfully complete the **BERDE** Certification process to get your project **BERDE** certified.

Visit berdeonline.org for the registration procedures.

For registration concerns, please contact Mr. Chester de la Cruz at BERDE@philgbc.org.



ANZ/PH

Advancing Net Zero Philippines (***ANZ/PH***) aims to transform the design, construction and operations of projects towards the **net zero goal**.

ANZ/PH aims to transform the built environment by reducing resource consumption and emissions and shifting towards more sustainable sources to achieve project impact neutrality and provide positive benefits.

What is **Net Zero Energy?**

Net Zero Energy is the **conservation and optimization of the energy use** in projects, and the **use of the renewable energy** for the project's remaining **operational energy demand**.



Net Zero Energy



Conserve

Prioritize the conservation of energy using **passive design strategies** to reduce the operational energy demand.



Optimize

Further reduce the operational energy demand using **energy-efficient technologies and strategies**.



Renew

Use **renewable energy** for the reduced operational energy demand of the project.

Achieve a **Net Zero** built environment

The PHILGBC is implementing the pilot run for the Net Zero Energy Certification under the Advancing Net Zero Philippines (**ANZ/PH**).

ANZ/PH aims to transform the design, construction and operations of projects towards the **net zero goal**.

For more information about the ANZ/PH program, please contact Mr. Mario Suelto at ANZPH@philgbc.org.

Procure green building products and services

Search through the database to find out about:

- Features and performance of the **products available in the market.**
- **Expertise** available in the green building industry.
- Features and performance of the **green buildings for lease** in the market.

For more information about Green Building PH, please contact Ms. Rowena Elayda at GreenBuildingPH@philgbc.org.

GreenBuildingPH.org



Incorporate green building in your policies and programs

Participate in the advocacy of green building by:

- Engaging your local government officials and inspire them to incorporate green building principles in your local policies;
- Actively participating in national and local discussions on green building and sustainability programs;
- Sharing your project data and case studies; and
- Participating in the legislative activities of the Council.

For legislative concerns, please contact the PHILGBC National Secretariat, through Ms. Sarah Alpapara at legislative@philgbc.org.



Become a Certified **BERDE** Professional

Certified **BERDE** Professionals assist project teams in the design, construction and operations of green building projects, and in pursuing **BERDE** Certification.

For more information about the CBP program, please contact Ms. Rowena Elayda at CBP@philgbc.org.

For trainings, please contact Mr. Chester de la Cruz at BERDE@philgbc.org.



Thank you!

For comments to improve this material, please e-mail BERDE@philgbc.org.



philgbc.org berdeonline.org



youtube.com/PHILGBC



@PHILGBC @GoBERDE



fb.com/PHILGBC



@PHILGBC



Copyright

© 2020 Philippine Green Building Council

All rights reserved.

The download of this document is permitted by the Philippine Green Building Council (PHILGBC).

The distribution, selling or modification of this document is prohibited. Any unlawful use of this document shall be subject to sanction and legal action of the PHILGBC.

Icons used in this document are modified from Google's [Material Icons Library](#). The PHILGBC and the **BERDE** logos are marks owned by the PHILGBC. Other images in the document are prepared by the PHILGBC National Secretariat for promotion and education materials of the PHILGBC.

This document was prepared using Microsoft PowerPoint, with Arial as its primary font and Roboto for the header font. Layout and design of the slides and notes are prepared by the PHILGBC National Secretariat.